



PRODUCT SHEET
MONARCH 6036
 60" X 36" X 20"



THERMOMASSEUR® BATH	\$
TUB	\$

THERMOMASSEUR (TMU)	
Jets	40
1 heated backrest	included
MiaPlus® Control (uninstalled)	included
Geysair®	included
AromaCloud®	N/A
Chromatherapy - 2 LED	\$

TUB no therapy	
Chromatherapy - 2 LED	\$
WarmTouchShell®	\$
DOT control	included with therapy

FEATURES			
Installation	Drop-in or Alcove (3 walls)		
No. of bathers	↓	Imp. gallons	40
US gallons	48	Integrated waste & overflow	inst. & incl.
INTEGRATED WASTE & OVERFLOW			
Chrome, White			
Brass, Brushed Nickel, Polished Nickel			

FEATURES (INCLUDED)	
COLOR (INNER SHELL)	DECK COLOR
Standard <input type="checkbox"/> White	Standard <input type="checkbox"/> Grey Expo <input type="checkbox"/> Noka <input type="checkbox"/> Jet Black <input type="checkbox"/> Lagos Blue

OPTIONAL UPCHARGE APPLICABLE	
FINISH (INNER SHELL)	
UltraVelour Matte Finish (White Only)	\$
DECK COLOR	
Optional <input type="checkbox"/> Quasar Light <input type="checkbox"/> Piatra Grey <input type="checkbox"/> Emperado <input type="checkbox"/> Tuscan Dawn <input type="checkbox"/> Statuario Maximus	\$

CONTROL (TMU ONLY)	
MiaMulti® (uninstalled)	\$
WASTE & OVERFLOW	
Chrome	\$
White	\$
Brass	\$
Brushed nickel, Polished nickel & Oil-rubbed bronze	\$
TILE FLANGE (specify left or right)	
Ordered with bath, uninstalled	\$
Factory installed	\$

DON'T FORGET THAT THIS MODEL IS AVAILABLE IN WHITE ONLY WITH CHOICE OF DECK COLOR. DON'T FORGET TO SPECIFY THE FINISH OF THE INTEGRATED WASTE & OVERFLOW.

1 800 463.2187 From 8 a.m. to 8 p.m. Monday to Thursday (EST)
 info@bainultra.com From 8 a.m. to 5 p.m. on Friday (EST)

MONARCH 6036 60" X 36" X 20"

ACCESSORIES (OPTIONAL)

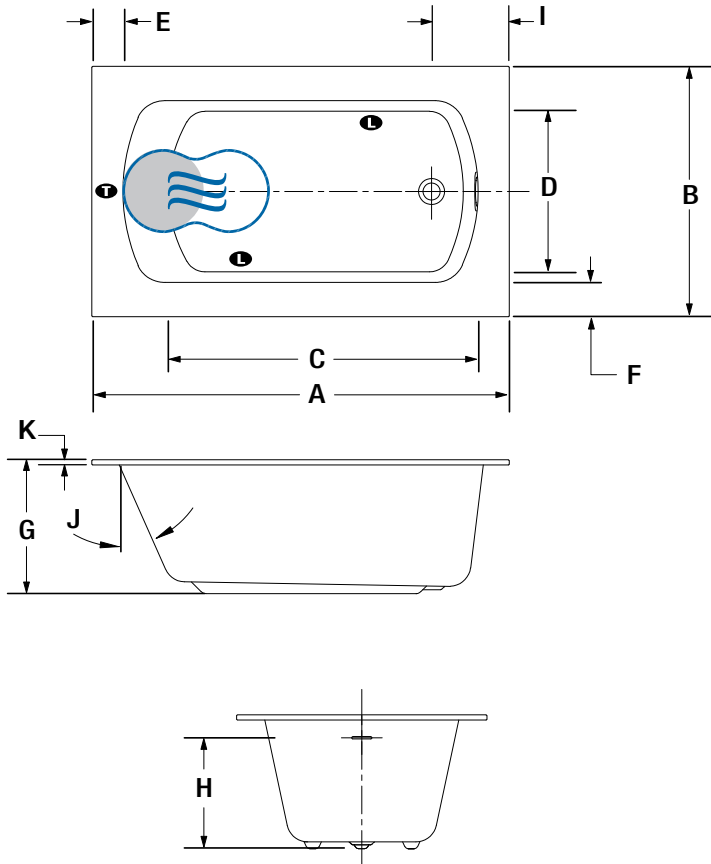
OTHER

Control cannot be installed on the quartz deck.

TOTAL PRICE

\$

DROP-IN/ALCOVE INSTALLATION



LETTER	DESCRIPTION	MEASURE
A	Total length	60"
B	Total width	36"
C	Bathing well length (at height of jets)	42 3/8"
D	Bathing well width (at height of jets)	22 3/4"
E	Deck width (backrest)	4 5/8"
F	Deck width (sides)	5 1/8"
G	Tub height	19 7/8"
H	Height from waste to center of overflow	15 3/8"
I	Outside edge to center waste	11 1/8"
J	Slope of backrest	24°
K	Quartz deck height	3/4"

Indicates turbine position (TMU)

Indicates LED light position

Indicates WarmTouchShell position (TUB)

Indicates heated backrest (TMU)

TECHNICAL SPECIFICATIONS

Hot water supply required	Should be 70% of water capacity of tub or greater.
Turbine	Access to the pump must be at least 18" X 22". Standard connection is 20 A, 120 V, 60 hz, dedicated line with a Ground-Fault Circuit Interrupter (GFCI). For any additional option, a second line is needed 15 A, 120 V, 60 hz, dedicated line with a GFCI.
Our products must be installed by certified professionals only and according to our Owner's Manual as well as federal, provincial/state and local building codes and regulations (www.bainultra.com/documentation/documentation).	

Approx. shipping weight	244 lbs
Turbine power	600 W
Air heater	600 W

WARRANTY

Controls-LED-Geysair*	5 years
Quartz Deck*	15 years
Bath & turbine*	20 years

*Some restrictions apply | www.bainultra.com/warranty

The specifications shown indicate the outer edge dimension and the inside bathing capacity dimension measured at air jets' height. The manufacturer accepts a 1/4" [0,64 cm] variance. There are variations on each product and specifications are subject to change as we improve upon our product as required. The dimensions needed for site preparation and structure building will differ. BainUltra® assumes no responsibility for preparatory work done prior to the product being on site.

