



PRODUCT SHEET
EVANESCENCE 6634
 66" X 34" X 28"



FREESTANDING

THERMOMASSEUR® BATH	\$
TUB	\$

THERMOMASSEUR (TMU)

Jets	38
1 heated backrest	included
1 heated headrest	included
MiaMulti® Control*	included
Geysair®	included
AromaCloud®	N/A
Illuzio Chromatherapy NEW	\$
2 nd heated backrest (advanced technology)	\$

TUB (soaker)

AromaCloud®	N/A
Illuzio Chromatherapy NEW	\$
WarmTouchShell®	\$
DOT control	included with therapy
2 nd WarmTouchShell®	\$

FEATURES

Installation type	Freestanding		
No. of bathers		Raised headrests	2
US gallons	55	Integrated waste & overflow	inst. & incl.
Imp. gallons	46		

WASTE & OVERFLOW

Chrome, White
Brass, Brushed Nickel, Polished Nickel

FEATURES

COLOR

Standard



OPTIONAL UPCHARGE APPLICABLE

FINISH

UltraVelour Matte Finish (White Only)	\$
ISLAND TUB DRAIN™**	
Island Tub Drain™	\$



DON'T FORGET THAT THIS MODEL IS AVAILABLE IN WHITE ONLY. DON'T FORGET TO SPECIFY THE FINISH OF THE INTEGRATED WASTE & OVERFLOW.
 * CONTROL AND FAUCET CANNOT BE INSTALLED ON THE DECK OF THE BATH.
 ** AN ISLAND TUB DRAIN IS REQUIRED WHEN THERE IS NO ACCESS UNDER THE BATH.

1 800 463.2187
 info@bainultra.com

From 8 a.m. to 8 p.m. Monday to Thursday (EST)
 From 8 a.m. to 5 p.m. on Friday (EST)



The quest for your wellness®

www.bainultra.com

EVANESCENCE 6634 66" X 34" X 28"

ACCESSORIES (OPTIONAL)

CUTTING TEMPLATE

90000065

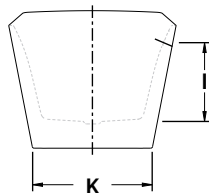
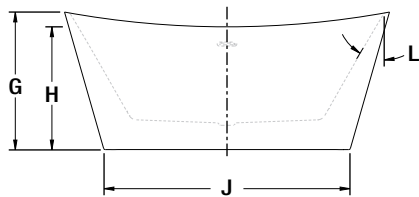
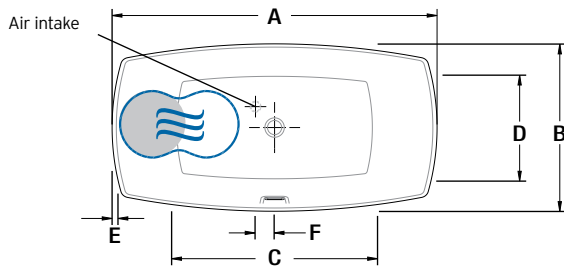
OTHERS

- Faucet must be freestanding or wall-mounted.
- The turbine must be remotely installed.
- Controls cannot be installed on the deck of the bath.

TOTAL PRICE

\$

FREESTANDING INSTALLATION



LETTER	DESCRIPTION	MEASURE
A	Total length	66"
B	Total width	34"
C	Bathing well length	41 7/8"
D	Bathing well width	21 1/2"
E	Deck width	1 1/4"
F	Center waste to air intake	4 1/4"
G	Total height to headrest	28"
H	Minimum height to center	25"
I	Maximum water level	16"
J	Base length	50"
K	Base width	24 1/4"
L	Slope of backrest	31°

● Heated backrest (TMU)

☞ Indicates WarmTouchShell position

TECHNICAL SPECIFICATIONS

Hot water supply required	Should be 70% of water capacity of tub or greater.
Turbine	Access to the pump must be at least 18" X 22". Standard connection is 20 A, 120 V, 60 hz, dedicated line with a Ground-Fault Circuit Interrupter (GFCI). For any additional option, a second line is needed 15 A, 120 V, 60 hz, dedicated line with a GFCI. Air vent necessary: 2" X 4" minimum

Our products must be installed by certified professionals only and according to our Owner's Manual as well as federal, provincial/state and local building codes and regulations (www.bainultra.com/documentation/documentation).

Approx. shipping weight	230 lbs
Turbine power	550 W
Air heater	600 W

WARRANTY

Controls-LED-Geysair*	5 years
Bath & turbine*	20 years

*Some restrictions apply | www.bainultra.com/warranty



The specifications shown indicate the outer edge dimension and the inside bathing capacity dimension measured at air jets' height. The manufacturer accepts a 1/4" [0,64 cm] variance. There are variations on each product and specifications are subject to change as we improve upon our product as required. The dimensions needed for site preparation and structure building will differ. BainUltra® assumes no responsibility for preparatory work done prior to the product being on site.