



PRODUCT SHEET  
**MERIDIAN DUO**  
 60" X 31" X 21"



<b>THERMOMASSEUR® BATH</b>	\$
<b>THERMASENS® BATH</b>	\$
<b>TUB no therapy</b>	\$

THERMOMASSEUR (TMU)	
Jets	36
1 heated backrest	included
Mia® Control	included
Geysair®	included
AromaCloud®	\$
Chromatherapy - 2 LED*	\$

THERMASENS (TMSU)		TUB no therapy
AromaCloud®	included	\$
Chromatherapy - 2 LED	included	\$
WarmTouchShell®	included	\$
DOT control	included	included with therapy

FEATURES			
Installation		Alcove (3 walls)	
No. of bathers	↓	Integrated tile flange and skirt with removable panel (specify right or left)	included
US gallons	35		
Imp. gallons	29		

**OPTIONAL UPCHARGE APPLICABLE**

**COLOR**

Standard		
White	Biscuit	
Optional		\$
Black	Sandbar	Gray

**CONTROL (TMU ONLY)**

Mia Plus*	\$
MiaMulti®	\$

**WASTE & OVERFLOW 16" X 35"**

Chrome	\$
White, Biscuit	\$
Brass	\$
Brushed nickel, Polished nickel & Oil-rubbed bronze	\$

\* THE MIA PLUS CONTROL IS INCLUDED WHEN PURCHASING CHROMATHERAPY ON A TMU.

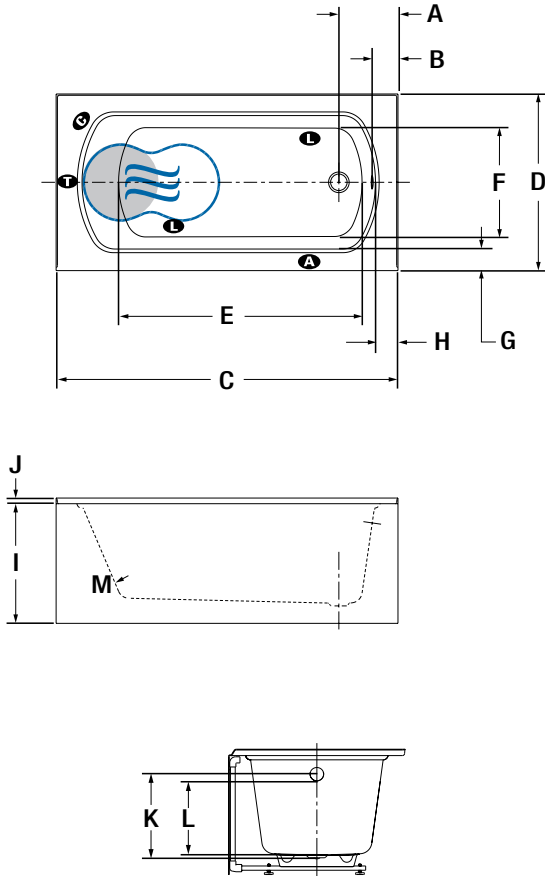
1 800 463.2187 info@bainultra.com From 8 a.m. to 8 p.m. Monday to Thursday (EST)  
 From 8 a.m. to 5 p.m. on Friday (EST)

# MERIDIAN DUO 60" X 31" X 21"

## ACCESSORIES (OPTIONAL)

INTEGRATED TILE FLANGE	Included (specify right or left).	OTHER	Integrated skirt with removable panel.
TOTAL PRICE		\$	

## ALCOVE INSTALLATION



LETTER	DESCRIPTION	MEASURE
A	Outside edge to center waste	10 3/8"
B	Outside edge to overflow	5 7/8"
C	Total length	60"
D	Total width	31"
E	Bathing well length	42 3/4"
F	Bathing well width	19 5/16"
G	Deck width	3 1/4"
H	Deck width at waste end	4"
I	Height from bottom of tub to top deck	21"
J	Tile flange height	1"
K	Height from waste to center of overflow	14 5/8"
L	Maximum water level	13"
M	Slope of backrest	23°

- Indicates turbine position (TMU)
- Indicates heated backrest (TMU)
- Indicates WarmTouchShell position (TMSU)
- Indicates LED light position
- Indicates control position when factory-installed
- Indicates AromaCloud position

When tiling flange is added, the AromaCloud will automatically be installed on the opposite side of the flange.

## TECHNICAL SPECIFICATIONS

Hot water supply required	Should be 70% of water capacity of tub or greater.
Turbine	Access to the pump must be at least 18" X 22". <b>Standard connection is 20 A, 120 V, 60 hz</b> , dedicated line with a Ground-Fault Circuit Interrupter (GFCI). <b>For any additional option, a second line is needed 15 A, 120 V, 60 hz</b> , dedicated line with a GFCI. Air vent necessary: 2" X 4" minimum

Our products must be installed by certified professionals only and according to our Owner's Manual as well as federal, provincial/state and local building codes and regulations ([www.bainultra.com/documentation/documentation](http://www.bainultra.com/documentation/documentation)).

Approx. shipping weight	136 lbs
Turbine power	600 W
Air heater	700 W

## WARRANTY

Controls-LED-Geysair*	5 years
Bath & turbine*	20 years

\*Some restrictions apply | [www.bainultra.com/warranty](http://www.bainultra.com/warranty)



The specifications shown indicate the outer edge dimension and the inside bathing capacity dimension measured at air jets' height. The manufacturer accepts a 1/4" [0,64 cm] variance. There are variations on each product and specifications are subject to change as we improve upon our product as required. The dimensions needed for site preparation and structure building will differ. BainUltra® assumes no responsibility for preparatory work done prior to the product being on site.