

charism 5736

Freestanding
57" x 36" x 23"



Product No.

Model Freestanding TMU BCH4OF00T-XX Soaker BCH4OF00N-XX

ThermoMasseur (TMU)

Air Jet System	\$9,655
Jets	35
1 heated backrest	Included
MiaPlus® Control*	Included
BU-Touch Control Application BUTOUCH	Included
Geysair®	Included
Illuzio Chromatherapy BCHRO6	\$995

Soaker

	\$7,050
Illuzio Chromatherapy BCHRO6	\$995
WarmTouchShell® BWTS	\$1,125
DOT Control	Included with therapy

Features

Installation Type	Freestanding
No. of bathers ♀ Imp. gallons 41 US gallons 49	
Integrated Drain & Overflow — ZenFlow† BOVERINIZF-01	
○ White 01	Installed & Included
Standard Bath Color p.17	
○ White 01	Included
Standard Deck Color BDECKCO-01 p.17	
○ White 01	Included

Options UPCHARGE APPLICABLE

Finish p.17	
○ UltraVelour Matte Finish (white only) BVEL2	\$850
Deck Color BDECKCO-XX p.17	
● Black 06 ● Copper 13 ● Crystal Rock 17	\$250
Universal Armrests BGBGU-XX p.16	
○ White 01	\$895
Bath Pillow BPILLOW p.252	\$240
Drain & Overflow p.14	
○ White 01	Incl. \$40
○ Matte White 32 ○ Chrome 07	\$40 \$70
○ Brushed Nickel 09 ○ Polished Nickel 10	
● Matte Black 19 ● Satin Brass 18	\$95 \$125
Island Tub Drain™*** p.15	
Island Tub Drain™ BISLDD	\$260
Cast Iron Island Tub Drain™ ISLDDCI	\$310
If Required by Construction Code	
Brass drain & overflow kit BDRCOB	\$240
Brass drain kit BDRCB	\$60

⚠ Don't forget that this model is available in White only with choice of deck color.

Don't forget to specify the finish of the Integrated drain & overflow.

† ZenFlow: Integrated overflow without a trim.
* For TMU, control and faucets cannot be installed on deck of the bath.
*** An Island Tub Drain™ is required when there is no access under the bath.



charism 5736

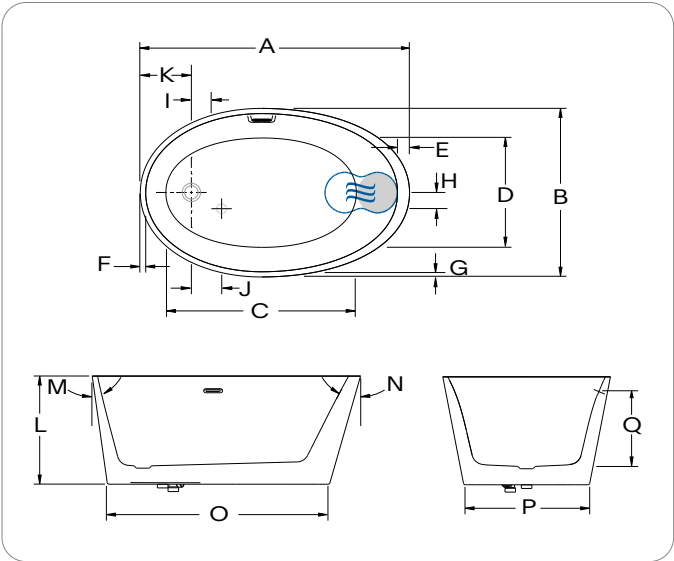
Freestanding
57" x 36" x 23"



Copper deck color (optional)



Technical Specifications



Letter	Description	Measure
A	Total length	57 1/4"
B	Total width	35 7/8"
C	Bathing well length	41 1/2"
D	Bathing well width	23 7/8"
E	Deck width at headrest	2 5/8"
F	Deck width (drain end)	1 1/8"
G	Deck width	1 1/8"
H	Center bath drain to air intake	3 1/2"
I	Center bath drain to drain hole	4 1/4"
J	Center bath drain to air intake	6 1/2"
K	Outside edge to center bath drain	10 3/4"
L	Total height	23 1/4"
M	Slope at drain end	12°
N	Slope of backrest	31°
O	Base length	47 3/8"
P	Base width	26 7/8"
Q	Maximum water level	15 7/8"

● Indicates heated backrest (TMU) ☉ Indicates WarmTouchShell® position (Soaker)

Hot water supply required	The hot water supply should be 70% or more of the bath's total water capacity.
Turbine	Access to the pump must be at least 18" x 22". Standard connection is 20 A, 120 V, 60 Hz, dedicated line with a Ground-Fault Circuit Interrupter (GFCI). For any additional option, a second line is needed 15 A, 120 V, 60 Hz, dedicated line with a GFCI. Air vent necessary: 2" x 4" minimum.
Others	The Geysair® is located on the same side as the heated backrest. It must not be relocated. It must be connected to the hot water supply and be accessible (provide access). Faucet must be freestanding or wall-mounted. The turbine must be remotely installed. Controls cannot be installed on the bath.

Our products must be installed by certified professionals only and according to our Owner's Manual as well as federal, provincial/state and local building codes and regulations (www.bainultra.com/dealers/dealer-documentation-and-catalog).

Cutting template	# 90000070
Approx. shipping weight	210 lb
Turbine power	550 W
Air heater	600 W

Warranty

Controls-LED-Geysair*	5 years
Bath & turbine*	20 years

* Some restrictions apply | www.bainultra.com/warranty

Dimensions are subject to change; measured at external edges. Bathing well measured at air jet level. Tolerance: ±0.25" (±0.64 cm). Ensure bathtub is received prior to any construction. BainUltra® is not responsible for any preparatory work done before product arrival.