

inua 6636

66" x 36" x 23"



Product No.

Model	Standard 1 1/2" deck	TMU	BINLRD00T-XX	Soaker	BINLRD00N-XX
Model	Slim deck 1/2"	TMU	BINLRD10T-XX	Soaker	BINLRD10N-XX

ThermoMasseur (TMU)

Air Jet System	\$7,975
Jets	50
1 heated backrest	Included
MiaPlus® Control	Included
BU-Touch Control Application <i>BUTOUCH</i>	\$495
Geysair®	Included
AromaCloud® <i>BAROMAC</i>	\$590
AromaFlow™ <i>BAROMAF</i>	\$950
Illuzio Chromatherapy <i>BCHRO6</i>	\$995

Soaker

AromaCloud® <i>BAROMAC</i>	\$590
AromaFlow™ <i>BAROMAF</i>	\$950
Illuzio Chromatherapy <i>BCHRO6</i>	\$995
WarmTouchShell® <i>BWTS</i>	\$1,125
DOT Control	Included with therapy

Features

Installation Type	Drop-in
No. of bathers	2
Imp. gallons	51
US gallons	62
Raised seat	1
Inverted V	1
Armrests	2
Grab bars (Color match)	2
Comfort Cushion (Specify color: Grey or Black)	p.253 1 Included
Standard Bath Color	p.17
White 01	Included
Biscuit 02	Included

Options UPCHARGE APPLICABLE

Finish	p.17			
UltraVelour Matte Finish (white only)	<i>BVEL1</i>			\$650
Clear Acrylic Grab Bars	<i>BGBG10-XX</i>	p.16		
Chrome 07				\$60
Brushed Nickel 09				inserts
Bath Pillow	<i>BPILLOW</i>	p.252		\$240
Drain & Overflow	p.14			
Chrome 07			Integrated ZenFlow™ <i>BOVERINZF-XX</i>	Integrated with trim <i>BOVERIN-XX</i>
White 01		\$205	\$205	\$260
Biscuit 02		\$165	\$205	\$290
Brushed Nickel 09		\$205	\$235	\$290
Polished Nickel 10		\$205	\$235	\$290
Oil-rubbed Bronze 11		N/A	N/A	\$400
Matte Black 19		\$260	\$290	N/A
Satin Brass 18				
Matte White 32		\$205	\$235	N/A
If Required by Construction Code				
Brass drain & overflow kit†	<i>BDRCOB</i>		\$240	
Brass drain kit†	<i>BDRCB</i>		\$60	
16" x 35" Cable driven brass drain & overflow kit	<i>BOVERBR</i>		\$240	

⚠ Don't forget to specify the deck height (1/2" or 1 1/2").

Faucets should be installed on the most level portion of the deck surface.

† ZenFlow: Integrated overflow without a trim.
‡ When ordering an AromaFlow, an Integrated drain & overflow is mandatory (Upcharge). Specify the finish of the drain.
‡ When ordered with Integrated drain & overflow.

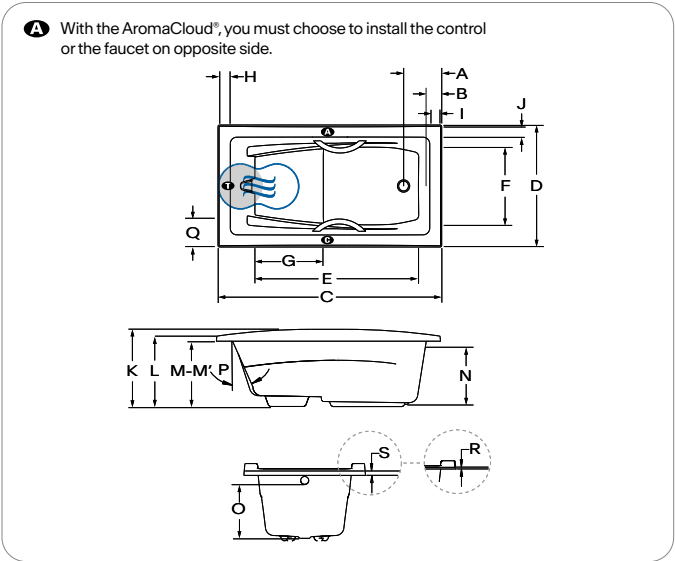
inua 6636

66" x 36" x 23"



Comfort Cushion (included)

Technical Specifications



- A** AromaCloud® position
- T** Turbine position (TMU)
- H** Indicates heated backrest (TMU)
- S** Indicates WarmTouchShell® position (Soaker)

Letter	Description	Measure
A	Outside edge to center drain	11 ¼"
B	Outside edge to overflow	4 ½"
C	Total length	66"
D	Total width	36"
E	Bathing well length	48 ⅞"
F	Bathing well width at center zone	22 ⅞"
G	Raised seat length	20 ⅞"
H	Deck width at backrest end	4 ⅞"
I	Deck width at drain end	4 ⅞"
J	Deck width	4"
K	Height from bottom of bath to top deck	23"
L	Total height to headrest	21"
M	Height from bottom of bath to bottom of standard deck	19 ½"
M'	Height from bottom of bath to bottom of slim deck	20 ½"
N	Height from bottom of drain to center of overflow	17 ⅞"
O	Maximum water level (drain & overflow 16" x 35")	15 ¾"
	Maximum water level (Integrated drain & overflow)	16 ⅝"
	Maximum water level with AromaFlow	15 ¾"
P	Slope of backrest	24°
Q	Minimum spout reach	8"
R	Slim deck minimum height	½"
S	Standard deck minimum height	1 ½"

Hot water supply required	The hot water supply should be 70% or more of the bath's total water capacity.
Turbine	Access to the pump must be at least 18" x 22". Standard connection is 20 A. 120 V, 60 Hz, dedicated line with a Ground-Fault Circuit Interrupter (GFCI). For any additional option, a second line is needed 15 A. 120 V, 60 Hz, dedicated line with a GFCI. Air vent necessary: 2" x 4" minimum.
Therapeutic Comfort Cushion - INCLUDED	Made of ultraresistant urethane gel. Extremely comfortable and soft to the touch. Fully waterproof. Remarkably durable. Color available: Grey or Black.
Others	The Geysair® is located on the same side as the heated backrest. It must not be relocated. It must be connected to the hot water supply and be accessible (provide access).
	The water level may vary when an AromaFlow or an Integrated drain & overflow is installed.

Approx. shipping weight	138 lb
Turbine power	550 W
Air heater	600 W

Warranty

Controls-LED-Geysair*	5 years
Bath & turbine*	20 years

* Some restrictions apply | www.bainultra.com/warranty

Our products must be installed by certified professionals only and according to our Owner's Manual as well as federal, provincial/state and local building codes and regulations (www.bainultra.com/dealers/dealer-documentation-and-catalog).

Dimensions are subject to change; measured at external edges. Bathing well measured at air jet level. Tolerance: ±0.25" (±0.64 cm). Ensure bathtub is received prior to any construction. BainUltra® is not responsible for any preparatory work done before product arrival.