

meridian 60

72" x 36" x 21"



Product No.

Model	TMU BMESRIOOT-XX	Soaker BMESRIOON-XX
-------	------------------	---------------------

ThermoMasseur (TMU)

Air Jet System	\$5,600
Jets	44
1 heated backrest	Included
MiaPlus® Control	Included
BU-Touch Control Application <i>BUTOUCH</i>	\$495
Geysair®	Included
AromaCloud®** <i>BAROMAC</i>	\$590
Illuzio Chromatherapy <i>BCHRO6</i>	\$995
2nd heated backrest (WTS-1 zone) <i>BSHB</i>	\$1,125

Soaker

AromaCloud®** <i>BAROMAC</i>	\$590
Illuzio Chromatherapy <i>BCHRO6</i>	\$995
WarmTouchShell® <i>BWTS</i>	\$1,125
DOT Control	Included with therapy
2nd WarmTouchShell® <i>BWTS2</i>	\$370

Features

Installation Type	Drop-in & Alcove (3 walls)
No. of bathers ♀♂ Imp. gallons 52 US gallons 63	
Standard Bath Color <i>p.17</i>	
<input type="radio"/> White 01 <input type="radio"/> Biscuit 02	Included

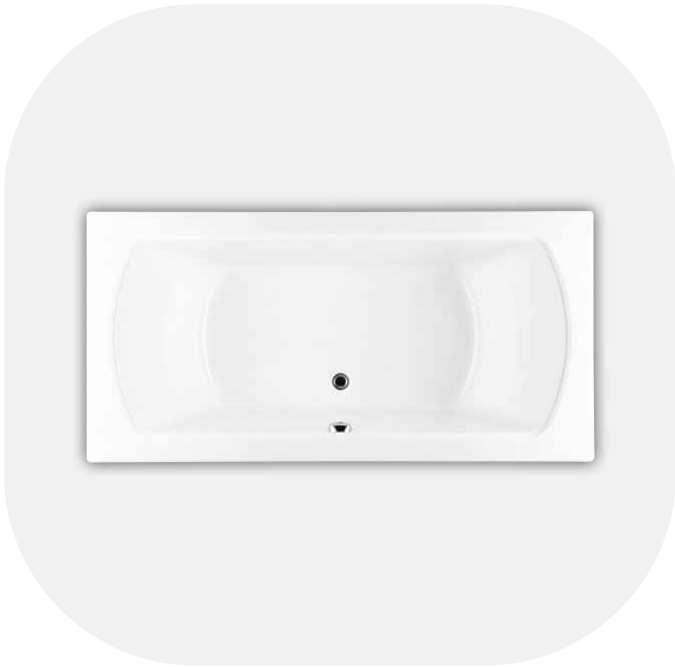
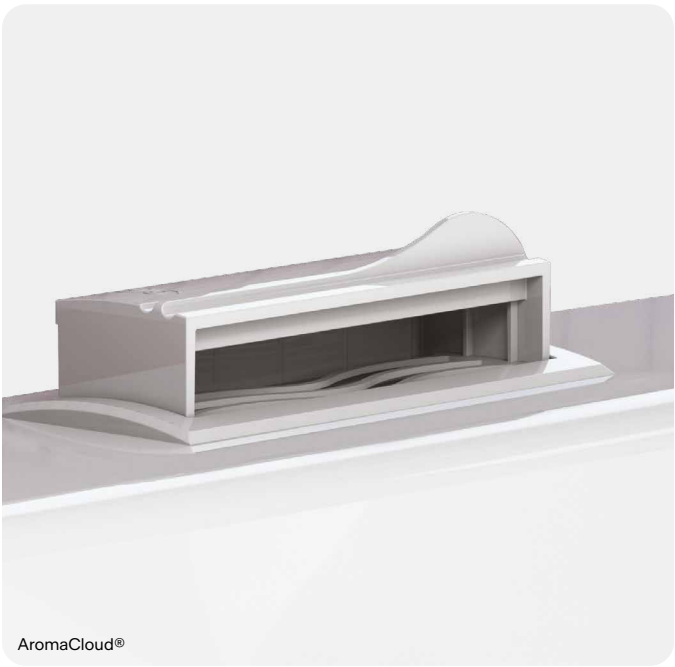
Options UPCHARGE APPLICABLE

Skirt <i>p.254</i>	Multifit <i>BSMUL-XX</i>	SJ-1 <i>BSJ1-XX</i>
<input type="radio"/> White 01 <input type="radio"/> Biscuit 02	\$695	\$715
Tile Flange (specify right or left) <i>p.15</i>		
Ordered with bath (not installed) <i>BTILEN</i>	\$79	
Factory-installed. Front <i>BTILEF</i> , Back <i>BTILEB</i> , Special installation <i>BTILEO</i>	\$155	
Bath Pillow <i>BPILLOW p.252</i>	\$240	
Comfort Cushion <i>BCUSHIONA p.253</i>	\$540	
<input type="radio"/> Grey 05 <input checked="" type="radio"/> Black 02		
Drain & Overflow <i>p.14</i>	Integrated ZenFlow† <i>BOVERINZF-XX</i>	16" x 35" <i>BOVER16-XX</i>
<input checked="" type="radio"/> Chrome 07	\$205	\$260
<input type="radio"/> White 01 <input type="radio"/> Biscuit 02	\$165	\$290
<input type="radio"/> Brushed Nickel 09	\$205	\$290
<input type="radio"/> Polished Nickel 10	\$205	\$290
<input checked="" type="radio"/> Oil-rubbed Bronze 11	N/A	\$400
<input checked="" type="radio"/> Matte Black 19 <input type="radio"/> Satin Brass 18	\$260	N/A
If Required by Construction Code		
16" x 35" Cable driven brass drain & overflow kit <i>BOVERBR</i>	\$240	

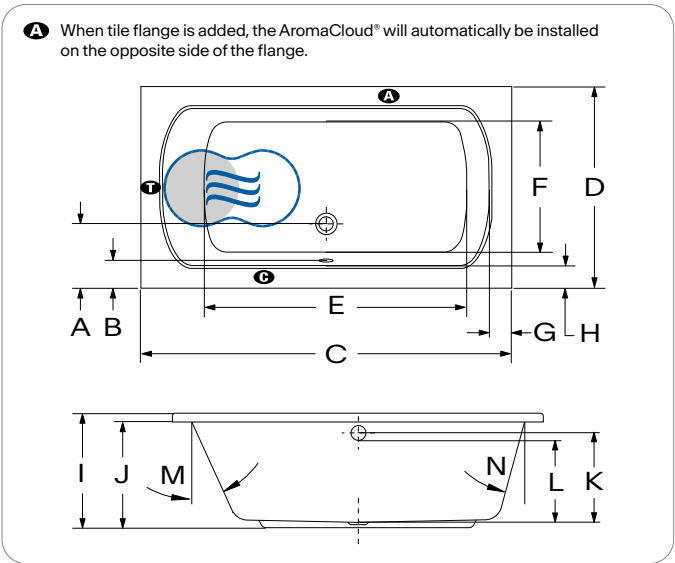
† ZenFlow: Integrated overflow without a trim.
** The AromaCloud® is built into the deck (factory installed).

meridian 60

72" × 36" × 21"



Technical Specifications



Letter	Description	Measure
A	Outside edge to center drain	10 5/8"
B	Outside edge to overflow	4 1/4"
C	Total length	71 3/8"
D	Total width	35 3/4"
E	Bathing well length	47 1/4"
F	Bathing well width	24 3/8"
G	Deck width at backrest end	4 1/8"
H	Deck width	4"
I	Height from bottom of bath to top deck	21 1/4"
J	Height from bottom of bath to bottom of deck	19 3/4"
K	Height from bottom of drain to center of overflow	16 7/8"
L	Maximum water level (Drain & overflow 16" x 35")	15 1/8"
M	Slope of backrest	26°
N	Slope of backrest	26°

A AromaCloud® position. When the tile flange is added, the AromaCloud® will automatically be installed on the opposite side of the flange.
G Control position when factory-installed (Mia® or DOT) **T** Turbine position (TMU)
● Indicates heated backrest (TMU) ◉ Indicates WarmTouchShell® position (Soaker)

Hot water supply required	The hot water supply should be 70% or more of the bath's total water capacity.
Turbine	Access to the pump must be at least 18" x 22". Standard connection is 20 A, 120 V, 60 Hz, dedicated line with a Ground-Fault Circuit Interrupter (GFCI). For any additional option, a second line is needed 15 A, 120 V, 60 Hz, dedicated line with a GFCI. Air vent necessary: 2" x 4" minimum.
Others	The Geysair® is located on the same side as the heated backrest. It must not be relocated. It must be connected to the hot water supply and be accessible (provide access).
	Optional tile flange (specify front or back). When ordered with a factory-installed tile flange, the control will not be installed on the bath.

Our products must be installed by certified professionals only and according to our Owner's Manual as well as federal, provincial/state and local building codes and regulations (www.bainultra.com/dealers/dealer-documentation-and-catalog).

Cutting template	# 90000007
Approx. shipping weight	136 lb
Turbine power	550 W
Air heater	600 W

Warranty

Controls-LED-Geysair*	5 years
Bath & turbine*	20 years

* Some restrictions apply | www.bainultra.com/warranty

Dimensions are subject to change; measured at external edges. Bathing well measured at air jet level. Tolerance: ±0.25" (±0.64 cm). Ensure bathtub is received prior to any construction. BainUltra® is not responsible for any preparatory work done before product arrival.