

# nokori 6429

Freestanding  
64" x 29" x 23"



## Product No.

Model Freestanding TMU BNOIRFOOT-XX Soaker BNOIRFOON-XX

## ThermoMasseur (TMU)

Air Jet System	\$9,790
Jets	44
1 heated backrest	Included
MiaPlus® Control†††	Included
BU-Touch Control Application BUTOUCH	\$495
Geysair®	Included
AromaFlow†† BAROMAF	\$950
Illuzio Chromatherapy BCHRO6	\$995

## Soaker

AromaFlow†† BAROMAF	\$950
Illuzio Chromatherapy BCHRO6	\$995
WarmTouchShell® BWTS	\$1,125
DOT Control (not installed)	Included with therapy

## Features

Installation Type	Freestanding
No. of bathers ⓘ Imp. gallons 46 US gallons 55 Brass drain kit	Included
Integrated Drain & Overflow — ZenFlow† BOVERINIZF-01	
○ White 01	Installed & Included
Standard Bath Color p.17	
○ White 01	Included

## Options UPCHARGE APPLICABLE

Finish p.17		
UltraVelour Matte Finish (white only) <i>BVEL2</i>	\$850	
Universal Armrests <i>BGBGU-XX</i> p.16		
<input type="radio"/> White 01	\$895	
Tile Flange (specify position) p.15		
Ordered with bath (not installed) <i>BTILEN</i>	\$79	
Factory-installed, Right <i>BTILER</i> , Left <i>BTILEL</i> , Front <i>BTILEF</i> , Back <i>BTILEB</i> , Special installation <i>BTILEO</i>	\$155	
Bath Pillow <i>BPILLOW</i> p.252	\$240	
Drain & Overflow p.14	Integrated ZenFlow <sup>1</sup> <i>BOVERINZF-XX</i>	Integrated with trim <i>BOVERIN-XX</i>
<input type="radio"/> White 01	Incl.	\$40
<input type="radio"/> Matte White 32 <input type="radio"/> Chrome 07	\$40	\$70
<input type="radio"/> Brushed Nickel 09 <input type="radio"/> Polished Nickel 10		
<input type="radio"/> Matte Black 19 <input type="radio"/> Satin Brass 18	\$95	\$125
Air Intake <sup>***</sup> & Island Tub Drain <sup>TM***</sup> p.15		
Air intake & Island Tub Drain <sup>TM</sup> <i>BAIRISLD</i>	\$350	
Island Tub Drain <sup>TM</sup> <i>BISLDD</i>	\$260	
Cast iron island tub drain <sup>TM</sup> <i>BISLDDCI</i>	\$310	
Air intake <i>BAIRINT</i>	\$120	
Air intake installation	\$285 net	
If Required by Construction Code		
Brass drain & overflow kit <i>BDRCOB</i>	\$240	

ⓘ Don't forget that this bath is available in White only.

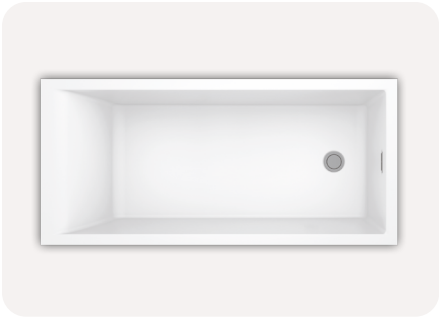
If turbine is installed under the bath, follow Nokori Installation Manual instructions.

† ZenFlow: Integrated overflow without a trim.  
†† When ordering an AromaFlow. Specify the finish of the drain.  
††† Control must be wall-mounted. Faucets must be freestanding or wall-mounted.  
†††† Air Intake is required when turbine is installed under the bath.  
\*\*\*\* An Island Tub Drain™ is required when there is no access under the bath.

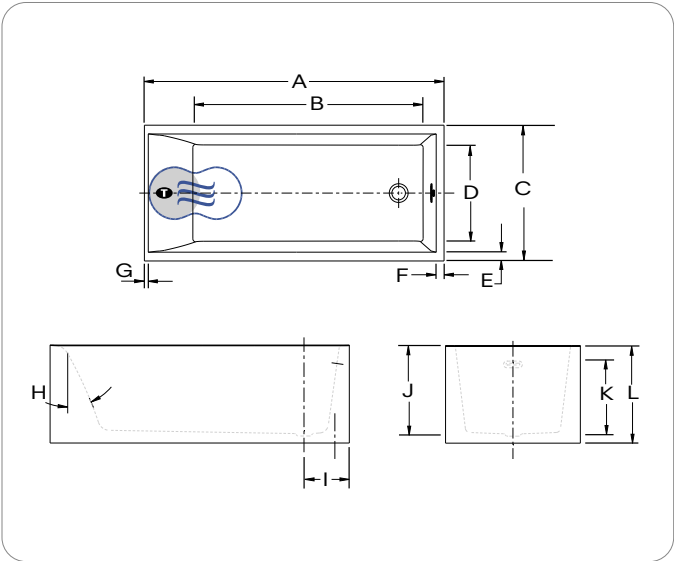


# nokori 6429

Freestanding  
64" x 29" x 23"



## Technical Specifications



Letter	Description	Measure
A	Total length	64"
B	Bathing well length	49 1/2"
C	Total width	29"
D	Bathing well width	20 7/8"
E	Deck width	2 1/8"
F	Deck width at drain end	2 1/8"
G	Deck width at backrest	7/8"
H	Slope of backrest	24°
I	Outside edge to center of drain	9 3/4"
J	Height from bottom of drain to top of deck	19"
K	Maximum water level	15"
	Maximum water level with AromaFlow	14 1/2"
L	Total height	23 1/2"

● Turbine position (TMU) ● Indicates heated backrest (TMU)  
☺ Indicates WarmTouchShell® position (Soaker)

Hot water supply required	The hot water supply should be 70% or more of the bath's total water capacity.
Turbine	Access to the pump must be at least 18" x 22". Standard connection is 20 A, 120 V, 60 Hz, dedicated line with a Ground-Fault Circuit Interrupter (GFCI). For any additional option, a second line is needed 15 A, 120 V, 60 Hz, dedicated line with a GFCI. Air vent necessary: 8 sq. in. minimum.
Others	The Geysair® is located on the same side as the heated backrest. It must not be relocated. It must be connected to the hot water supply and be accessible (provide access).  Faucet must be freestanding or wall-mounted. Controls cannot be installed on the bath. The turbine should be remotely installed. The turbine can also be installed under the bath. Please refer to the Nokori Installation Instructions. The water level will be lower when an AromaFlow is installed.

Our products must be installed by certified professionals only and according to our Owner's Manual as well as federal, provincial/state and local building codes and regulations ([www.bainultra.com/dealers/dealer-documentation-and-catalog](http://www.bainultra.com/dealers/dealer-documentation-and-catalog)).

Approx. shipping weight	250 lb
Turbine power	550 W
Air heater	600 W

## Warranty

Controls-LED-Geysair*	5 years
Bath & turbine*	20 years

\* Some restrictions apply | [www.bainultra.com/warranty](http://www.bainultra.com/warranty)

Dimensions are subject to change; measured at external edges. Bathing well measured at air jet level. Tolerance: ±0.25" (±0.64 cm). Ensure bathtub is received prior to any construction. BainUltra® is not responsible for any preparatory work done before product arrival.